

Service is  
Our Business

**HOFFMAN**

Process Inc.

Since 1962

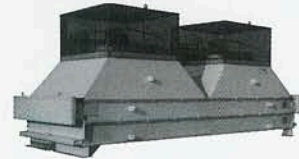
Heat Exchangers are  
Our Product

## SPECIALTY HELICAL FINNED TUBE, SPIRAL AND SHELL&TUBE HEAT EXCHANGERS

### ASME and TEMA Construction

#### MATERIALS

- Carbon Steel
- Stainless Steel
- Non-Ferrous Copper Alloy
- Inconel/Incoloy
- Nickel/Monel
- Batch Cooling and Heating
- Hastelloy®



**NEW  
PRODUCT**



- Thermal and Mechanical Design with Guarantee
- ASME, TEMA & API Codes/Standards
- Finned Tubing & Pipe to 6" IPS
- Carbon, Stainless Steel & Hastelloy® Fin Materials – Brazed Fin-to-Tube Bond to 1600° F
- Welded Tube-to-Tubesheet Joints
- Special Leak Detection Tests
- Process System Design and Shop-Assembled Modules
- In-House Software Including B-JAC and HTRI
- AutoCAD Drawings

#### SERVICES

- Gas Cooling and Heating
- Liquid Cooling and Heating
- Single Component Condensing
- Multi-Component Condensing
- Batch Cooling and Heating

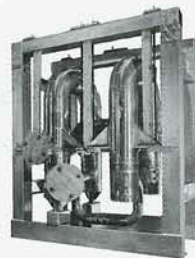


**NEW  
PRODUCT**



Spiral heat exchanger

All welded, Incoloy 800H  
high-temp NASA exchanger



## PIPE SIZE EXCHANGERS AND LARGE DIAMETER SPECIALTY EXCHANGERS

All stainless steel exchangers, including expansion joint for chemical plant service.



Special helical finned tube, U-tube horizontal exchanger, carbon steel materials throughout.



Fixed and floating tubesheet, large diameter exchangers, stainless steel tube side and carbon steel shell side.



Large diameter, fixed tubesheet exchanger with cross flow shell side design -- materials stainless steel on tube side and carbon steel on shell side.

Special BGM exchanger, split flow shell with bellows type expansion joint. 316 stainless steel shell side and AL6XN high alloy steel tube.



Special bare tube, helical coil, vertical exchanger, stainless steel tube side and carbon steel shell side.



Complete vertical reboiler of carbon steel materials for chemical plant service.



Midsize (single pass) BEM exchanger with flanged and flued expansion joint, carbon steel shell side and stainless steel tube side.

P.O. Box 345  
10 Chadwick Street  
Sewickley, PA 15143

1-800-947-3096  
412-741-6001

Fax: 412-741-0262  
E-Mail: [hpiheatex@aol.com](mailto:hpiheatex@aol.com)  
Web Site: [hpiheatexchange.com](http://hpiheatexchange.com)