

# INTRODUCING INTRODUCING.....

## **HOFFMAN** Express

### FOR PIPE SIZE SHELL & TUBE HEAT EXCHANGERS

## 4-5 WEEKS DELIVERY

Custom and Thermally Designed  
4"-12" Diameter Shell & Tube  
Heat Exchangers

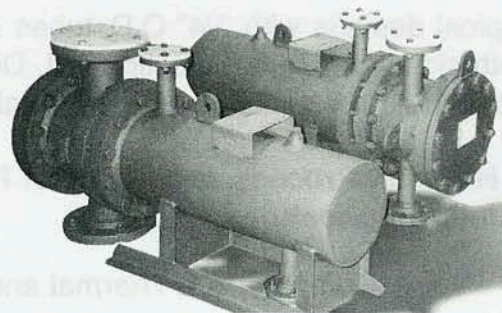
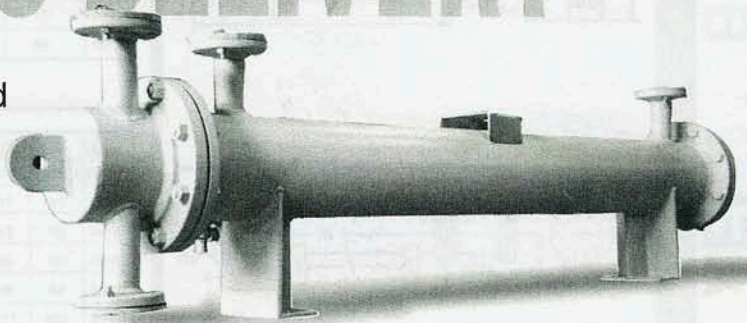
Job Shop and Replacement  
Heat Exchangers

Outline Drawings within  
5 Working Days

ASME Section VIII,  
Division 1 with Stamp  
and TEMA Class B and C

BEM, BEU and AEL  
TEMA Designs

Materials: 316 Stainless Steel  
and Carbon Steel with  
Design Conditions of  
150 psig at 400°F  
Both Sides

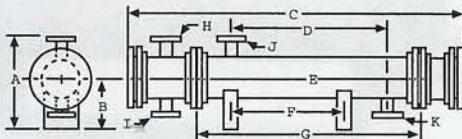
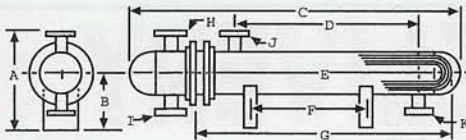
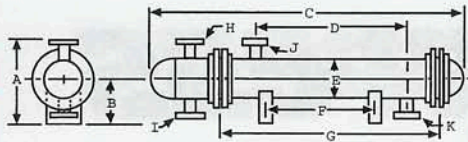


**HOFFMAN** Process, Inc.  
Since 1962

P.O. Box 345 • Sewickley, PA 15143  
412-741-6001 Fax: 412-741-0262

# STANDARD DESIGNS

AEL BEU BEM



Unit Size	No. Tubes			Surface Area (Ft <sup>2</sup> )			Dimensions						Connections				Lbs.	
	1 Pass	2 Pass	4 Pass	1 Pass	2 Pass	4 Pass	A	B	C	D	E	F	G	H	I	J		K
4-96	14	10	8	22	16	13	1'-4"	0'-6"	8'-9"	7'-0"	4.5"	6'-0"	7'-11 <sup>3</sup> / <sub>4</sub> "	1"	1"	2"	2"	233
6-96	29	22	20	46	35	31	1'-6"	0'-7"	9'-0"	7'-0"	6.625"	6'-0"	7'-11 <sup>3</sup> / <sub>4</sub> "	1 <sup>1</sup> / <sub>2</sub> "	1 <sup>1</sup> / <sub>2</sub> "	2 <sup>1</sup> / <sub>2</sub> "	2 <sup>1</sup> / <sub>2</sub> "	419
8-96	55	46	44	86	72	69	1'-8"	0'-8"	9'-1"	7'-0"	8.625"	6'-0"	7'-11 <sup>3</sup> / <sub>4</sub> "	2"	2"	3"	3"	765
10-96	84	80	72	132	126	113	1'-10"	0'-9"	9'-4"	7'-0"	10.75"	6'-0"	7'-11 <sup>3</sup> / <sub>4</sub> "	2 <sup>1</sup> / <sub>2</sub> "	2 <sup>1</sup> / <sub>2</sub> "	4"	4"	1132
12-96	128	118	104	201	185	163	2'-0"	0'-10"	9'-7"	7'-0"	12.75"	6'-0"	7'-11 <sup>3</sup> / <sub>4</sub> "	3"	3"	6"	6"	1590

Unit Size	No. Tubes		Surface Area (Ft <sup>2</sup> )		Dimensions						Connections				Lbs.	
	2 Pass	4 Pass	2 Pass	4 Pass	A	B	C	D	E	F	G	H	I	J		K
6-96	7	4	22	13	1'-6"	0'-7"	9'-0"	7'-0"	6.625"	6'-0"	8'-3 <sup>1</sup> / <sub>4</sub> "	1 <sup>1</sup> / <sub>2</sub> "	1 <sup>1</sup> / <sub>2</sub> "	2 <sup>1</sup> / <sub>2</sub> "	2 <sup>1</sup> / <sub>2</sub> "	350
8-96	15	14	47	44	1'-8"	0'-8"	9'-1"	7'-0"	8.625"	6'-0"	8'-4"	2"	2"	3"	3"	581
10-96	31	26	97	82	1'-10"	0'-9"	9'-4"	7'-0"	10.75"	6'-0"	8'-5"	2 <sup>1</sup> / <sub>2</sub> "	2 <sup>1</sup> / <sub>2</sub> "	4"	4"	919
12-96	48	40	151	126	2'-0"	0'-10"	9'-7"	7'-0"	12.75"	6'-0"	8'-6"	3"	3"	6"	6"	1292

Unit Size	No. Tubes			Surface Area (Ft <sup>2</sup> )			Dimensions						Connections				Lbs.	
	1 Pass	2 Pass	4 Pass	1 Pass	2 Pass	4 Pass	A	B	C	D	E	F	G	H	I	J		K
4-96	14	10	8	22	16	13	1'-4"	0'-6"	8'-9"	7'-0"	4.5"	6'-0"	7'-11 <sup>3</sup> / <sub>4</sub> "	1"	1"	2"	2"	233
6-96	29	22	20	46	35	31	1'-6"	0'-7"	9'-0"	7'-0"	6.625"	6'-0"	7'-11 <sup>3</sup> / <sub>4</sub> "	1 <sup>1</sup> / <sub>2</sub> "	1 <sup>1</sup> / <sub>2</sub> "	2 <sup>1</sup> / <sub>2</sub> "	2 <sup>1</sup> / <sub>2</sub> "	419
8-96	55	46	44	86	72	69	1'-8"	0'-8"	9'-1"	7'-0"	8.625"	6'-0"	7'-11 <sup>3</sup> / <sub>4</sub> "	2"	2"	3"	3"	765
10-96	84	80	72	132	126	113	1'-10"	0'-9"	9'-4"	7'-0"	10.75"	6'-0"	7'-11 <sup>3</sup> / <sub>4</sub> "	2 <sup>1</sup> / <sub>2</sub> "	2 <sup>1</sup> / <sub>2</sub> "	4"	4"	1132
12-96	128	118	104	201	185	163	2'-0"	0'-10"	9'-7"	7'-0"	12.75"	6'-0"	7'-11 <sup>3</sup> / <sub>4</sub> "	3"	3"	6"	6"	1590

Typical designs with 3/4" O.D. tubes on 15/16" triangular pitch. Designs are 150 psig at 400°F both sides, per ASME Section VIII, Division 1 and TEMA Class B and C, and with the U stamp. Horizontal or vertical mounting available.

## Hoffman Process, Inc.'s Line of Pipe-Size Shell & Tube Heat Exchangers offer the following features:

- Computerized Thermal and Mechanical Design
- Computerized Drawings
- ASME Code and TEMA Standards
- 3/4" O.D. Tubes Standard with 5/8" and 1" Diameters Available
- Materials: 316 Stainless Steel and Carbon Steel

## Special Designs, Materials and Higher Pressures Available Upon Request

Hoffman Process, Inc. offers a complete line of heat exchangers and distillation equipment including helical finned tube exchangers with stainless steel and carbon steel fin materials, air-cooled heat exchangers, double pipe heat exchangers and tank heaters; also custom-designed stripping systems for the pulp and paper and process industries. Shop-built, modular systems available.

**HOFFMAN** Process, Inc.  
Since 1962

P.O. Box 345 • Sewickley, PA 15143  
412-741-6001 Fax 412-741-0262

Represented By:

STHE-98